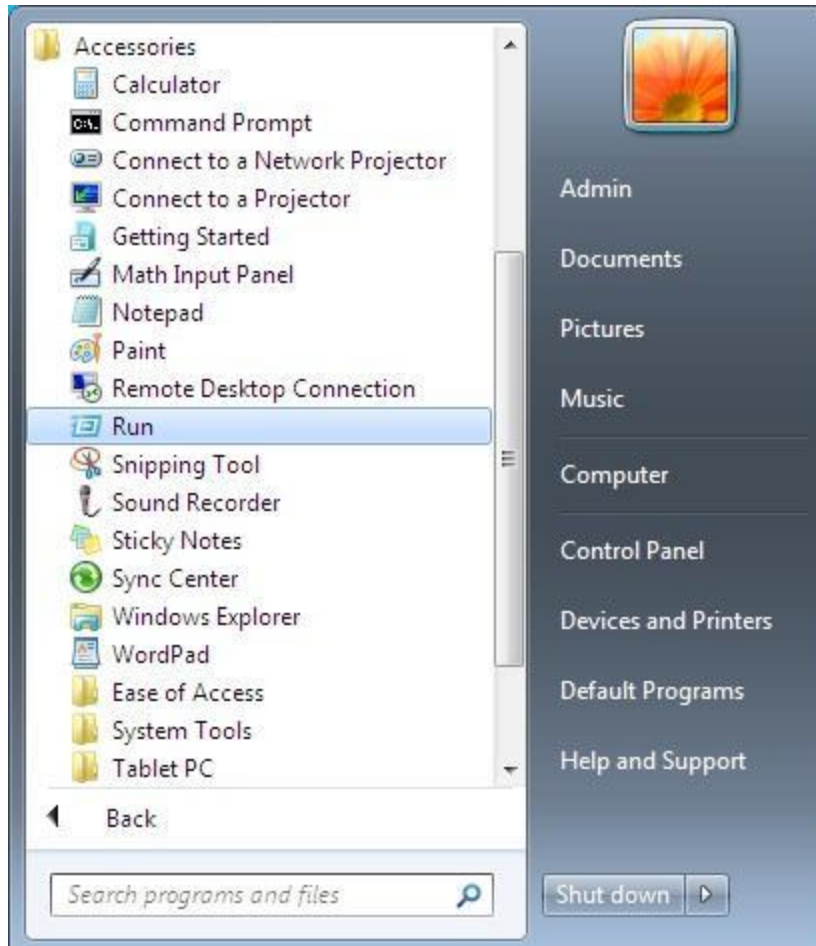
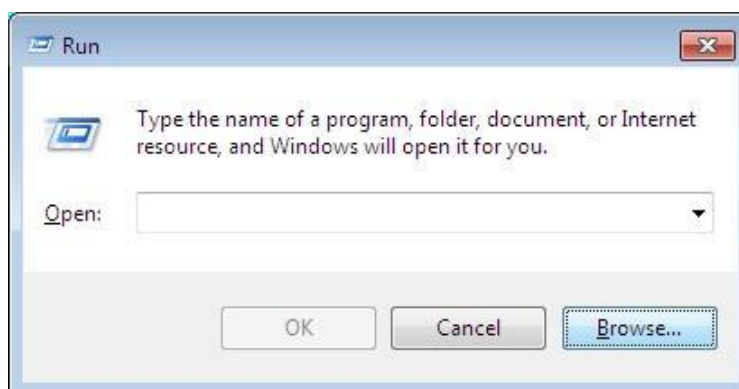


■ If the protect key is not recognized

1. Remove the HASP key if it is connected to your computer.
2. Insert the installation DVD into the DVD-ROM drive.
3. Click [Run] from [Start Menu] - [All Programs] - [Accessories].

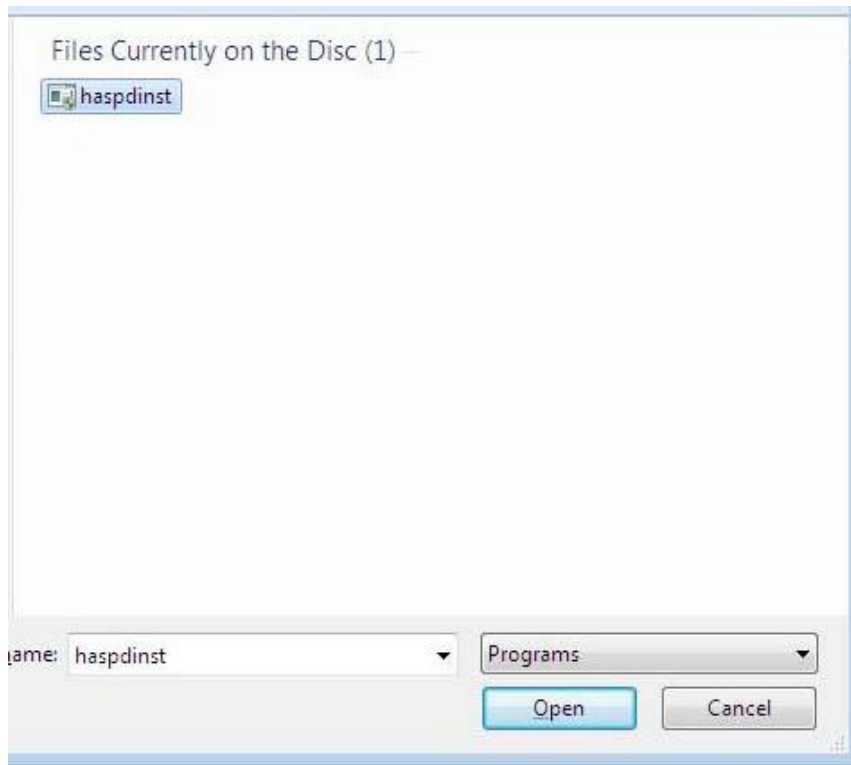


4. Click [Browse...] button of the [Run] dialog.

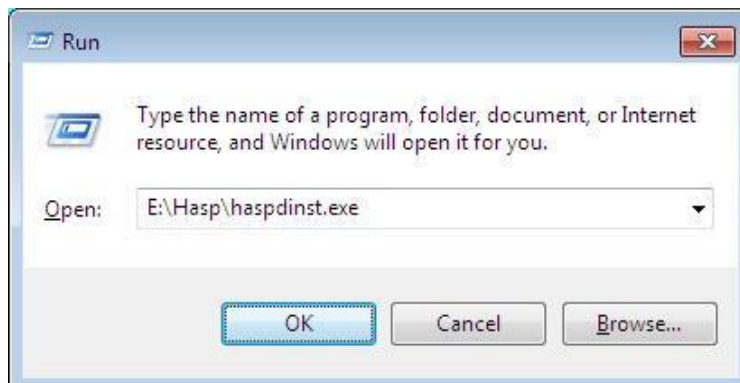


5. Select "haspdinst.exe" file of the [Hasp] folder in the installation DVD and click the [Open] button.

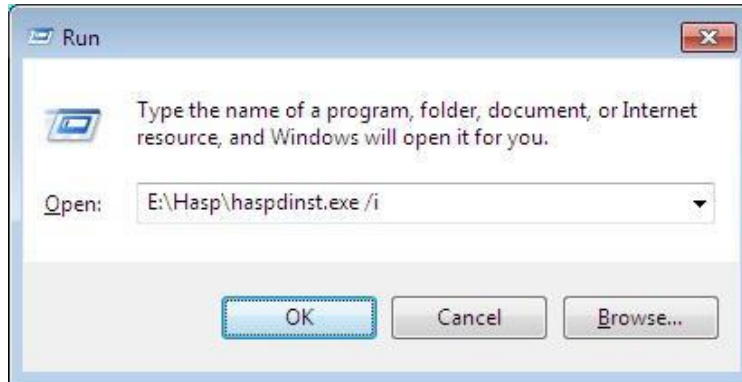
The directory of the folder is temporarily referred as "E:\Hasp".



The "haspdinst.exe" is displayed in the [Open].

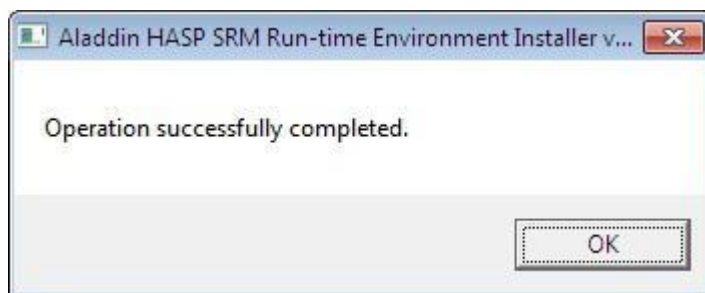


6. Input a space and "/i" after the displayed file name.



Click the [OK] button.

7. The installation process of the driver of the HASP key starts. If the installation is succeeded, the message box is displayed as shown below.

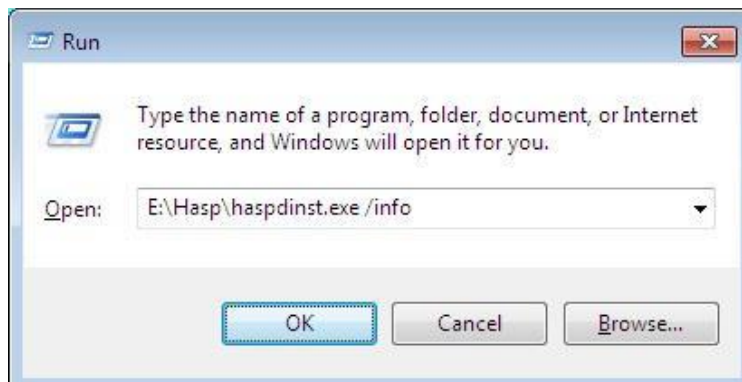


Click [OK] button.

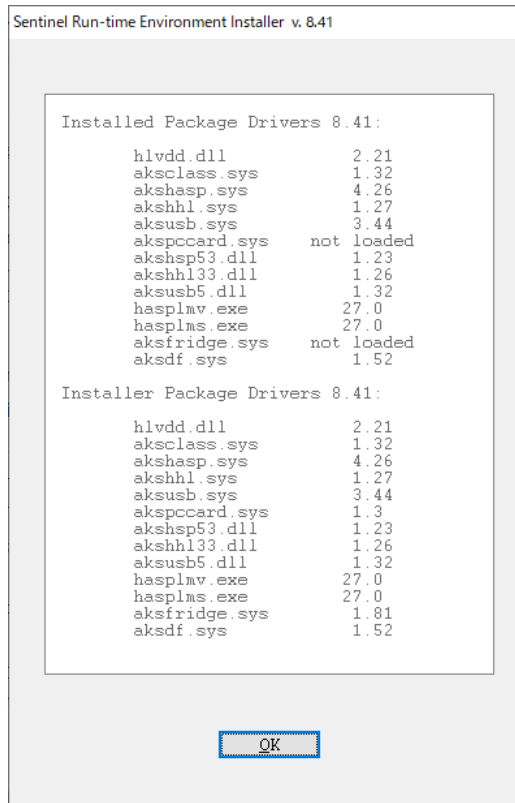
The installation process is completed at this point.

Connect the HASP key to your computer and starts the application.

8. If the installation is still failed despite operations shown above are done, display [Run] dialog and input as "E:\Hasp\ haspdinst.exe /info".

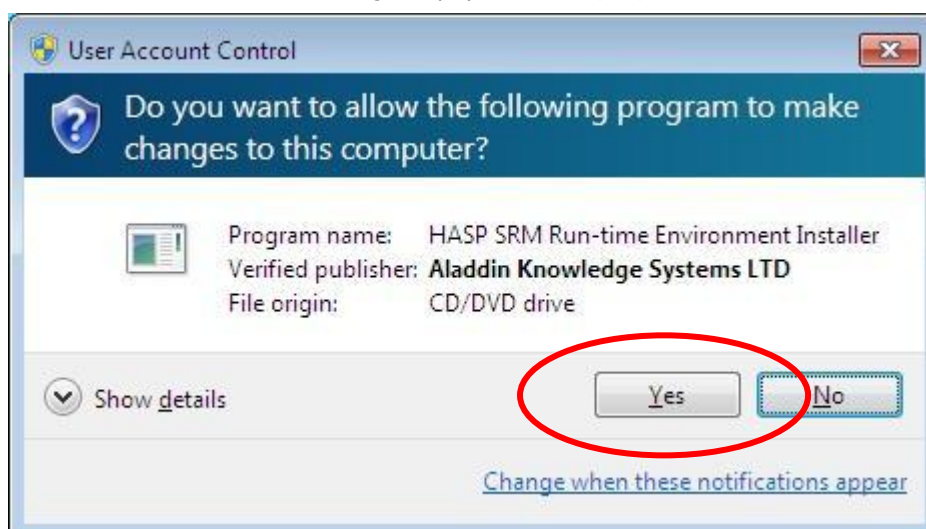


9. The version number of the installed HASP driver is displayed in the dialog shown below. The driver is successfully installed in your computer if the "Installed Package Driver" is "8.41" (as of Oct 7, 2022). If it not "8.41", restart the installation process from the beginning.



Note

When the "User Account Control" dialog is displayed, click the [Yes] button.



Program Compatibility Assistant

When the "Program Compatibility Assistant" dialog is displayed, select "This program installed correctly".

